

Sheltered Housing

Bartley Court, Wimborne, Dorset



Key Features

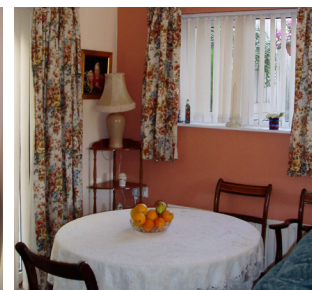
- Community room
- Laundry room
- Lift to some flats
- On site guest room
- Communal gardens
- Off-road car parking (subject to availability)
- Sheltered Housing Officer (Warden) Service
- Emergency Careline unit in each flat

The Scheme

Built in 1993 as an extension to the existing East Borough scheme, Bartley Court comprises 11 one bedroom flats and four two bedroom flats. Bartley Court is a warden assisted sheltered housing scheme for elderly single people and couples, ideally located in the centre of Wimborne, Dorset. In 2009, the Bartley Court scheme was extended to include a further six one bedroom flats, built on the site of the Trust's old office at West Borough.

Services

As a warden assisted sheltered housing scheme Bartley Court tenants receive seven day a week visits from a Sheltered Housing Officer. All support is tailored to individual's needs and East Boro also operate a Telephone Reassurance Service so that tenants can contact Support Staff out of hours. In addition, all flats are fitted with a Careline unit, allowing tenants to access help in an emergency 24 hours a day, every day of the year.



For more information about any East Boro housing scheme, to arrange a viewing or to apply for housing please contact us using the details below:



East Boro Housing Trust, Faulkner House, 31 West Street, Wimborne, Dorset BH21 1JS



info@ebht.org.uk



01202 883503



www.ebht.org.uk