

Sheltered Housing

Blake, Wimborne, Dorset



Key Features

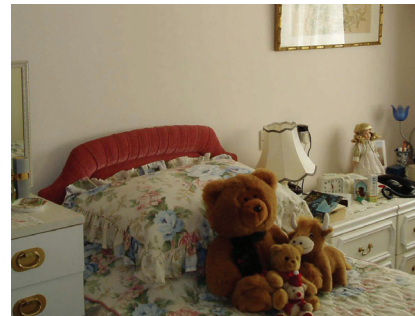
- Community room
- On site guest room
- Communal gardens
- Off-road car parking (subject to availability)
- Sheltered Housing Officer (Warden) Service
- Emergency Careline unit in each flat

The Scheme

Built in 1971 Blake is a warden assisted sheltered housing scheme for elderly single people and couples. The scheme comprises eight one bedroom flats and one two bedroom flat providing good sized accommodation close to Wimborne town centre. Six of the flats have views over the scheme's front lawns and the flats in the original Blake House benefit from some original features. The scheme also benefits from an on site Community Room and Guest Room.

Services

As a warden assisted sheltered housing scheme tenants of Blake receive seven day a week visits from a Sheltered Housing Officer. All support is tailored to individual's needs and East Boro also operate a Telephone Reassurance Service so that tenants can contact Support Staff out of hours. In addition, all flats are fitted with a Careline unit, allowing tenants to access help in an emergency 24 hours a day, every day of the year.



For more information about any East Boro housing scheme, to arrange a viewing or to apply for housing please contact us using the details below:



East Boro Housing Trust, Faulkner House, 31 West Street, Wimborne, Dorset BH21 1JS



info@ebht.org.uk



01202 883503



www.ebht.org.uk