



Faulkner House  
31 West Street, Wimborne  
Dorset, BH21 1JS

Tel: 01202 883503  
Fax: 01202 848877  
Email: [info@ebht.org.uk](mailto:info@ebht.org.uk)  
Website: [www.ebht.org.uk](http://www.ebht.org.uk)

**"Seeking to provide an effective, efficient and caring service to its Tenants"**

**CHRISTOPHERS  
WIMBORNE  
BH21 1RX**



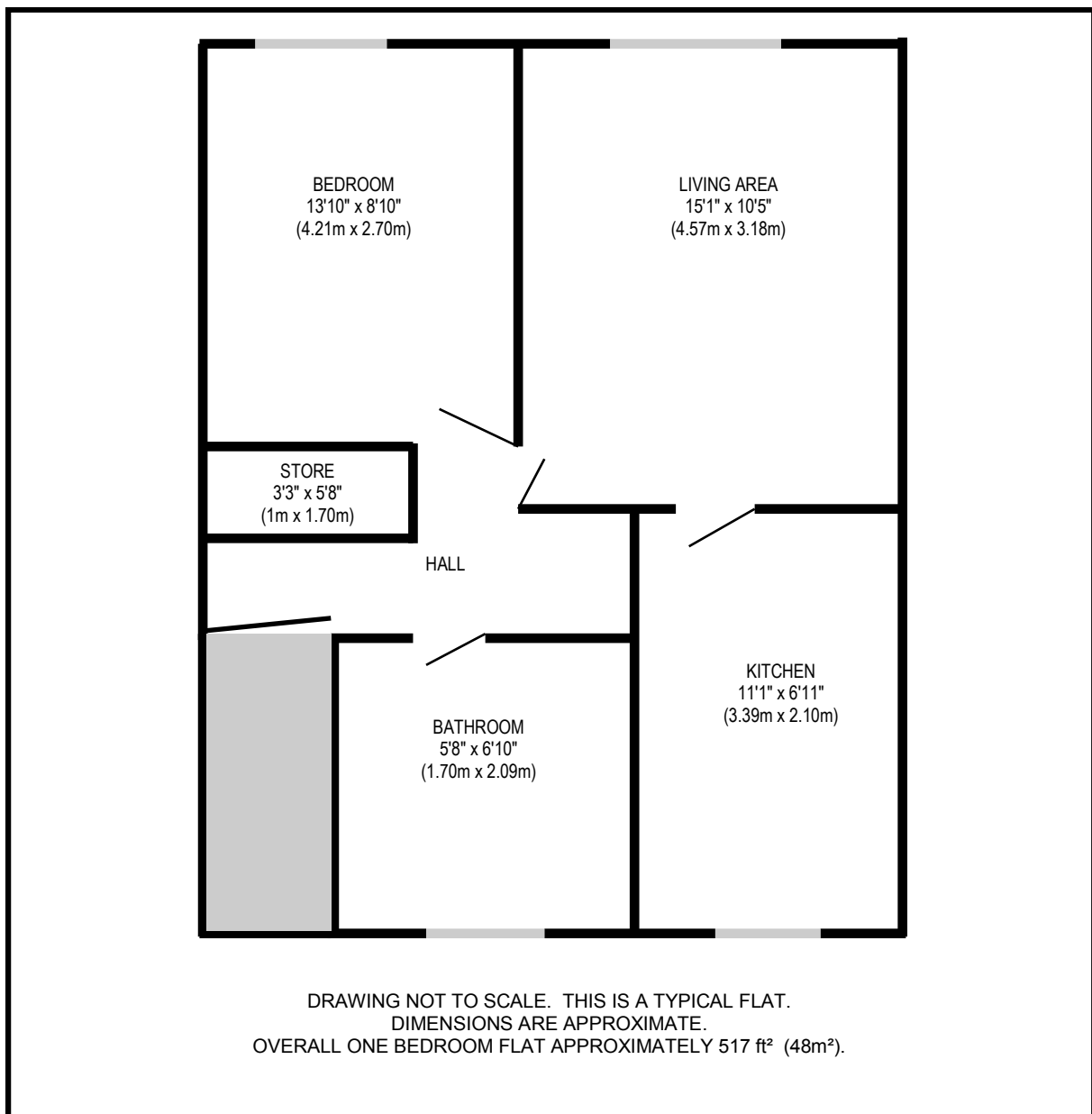
**Built in 1975, Christophers is a warden assisted sheltered accommodation for elderly single persons and couples, conveniently located close to Wimborne town centre, Dorset. In 2006 the scheme was extended to include four further one bedroom flats and provide tenants with a new community room.**

- 12 one bedroom flats
- 8 studio bungalows
- 4 one-bedroom bungalows
- 7 day per week visiting Sheltered Housing Officers / Warden Service
- 24-hour emergency care-line in each flat
- Communal gardens and car parking
- Community room
- Laundry room

## A TYPICAL ONE BEDROOM FLAT

Twelve one bedroom flats, six ground floor and six first floor. Two of the newly constructed ground floor one bedroom flats are built to full mobility standards.

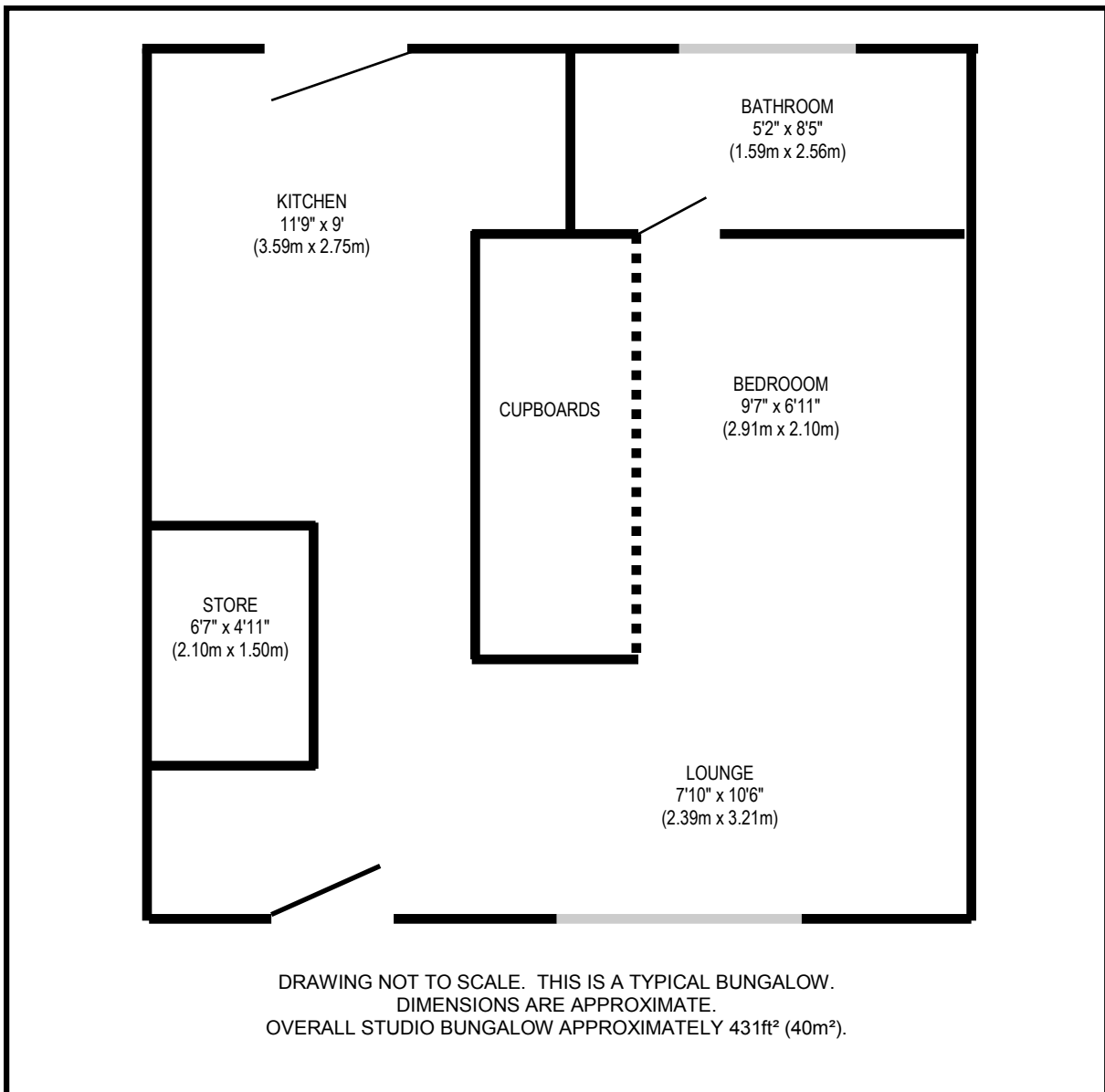
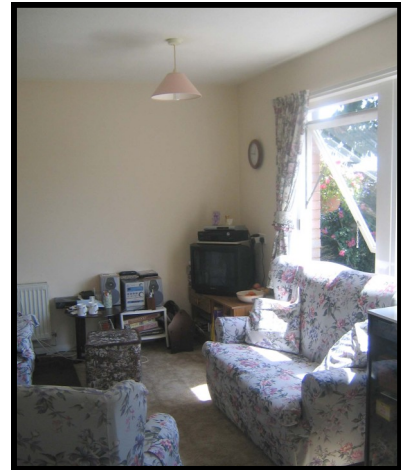
Each flat offers good sized accommodation with views over the front scheme lawns from both the sitting/dining room and the bedroom.



## A TYPICAL STUDIO BUNGALOW

Eight studio bungalows offer spacious accommodation with both front and back door entrances to the grounds within the housing scheme.

The studio bungalows are intended for single people and offer good sized accommodation within this spacious and well designed sheltered housing scheme.



## A TYPICAL ONE BEDROOM BUNGALOW

Four one bedroom bungalows offer spacious accommodation.

Bungalows have both front and back door entrances from the grounds of this spacious and well design sheltered housing scheme.

