



Faulkner House
31 West Street, Wimborne
Dorset, BH21 1JS

Tel: 01202 883503
Fax: 01202 848877
Email: info@ebht.org.uk
Website: www.ebht.org.uk

"Seeking to provide an effective, efficient and caring service to its Tenants"

**EAST BOROUGH
WIMBORNE
BH21 1PD**



Built in 1966, East Borough is a warden assisted sheltered accommodation for elderly single persons and couples.

Adjacent to Bartley Court, it is located in the centre of Wimborne, Dorset.

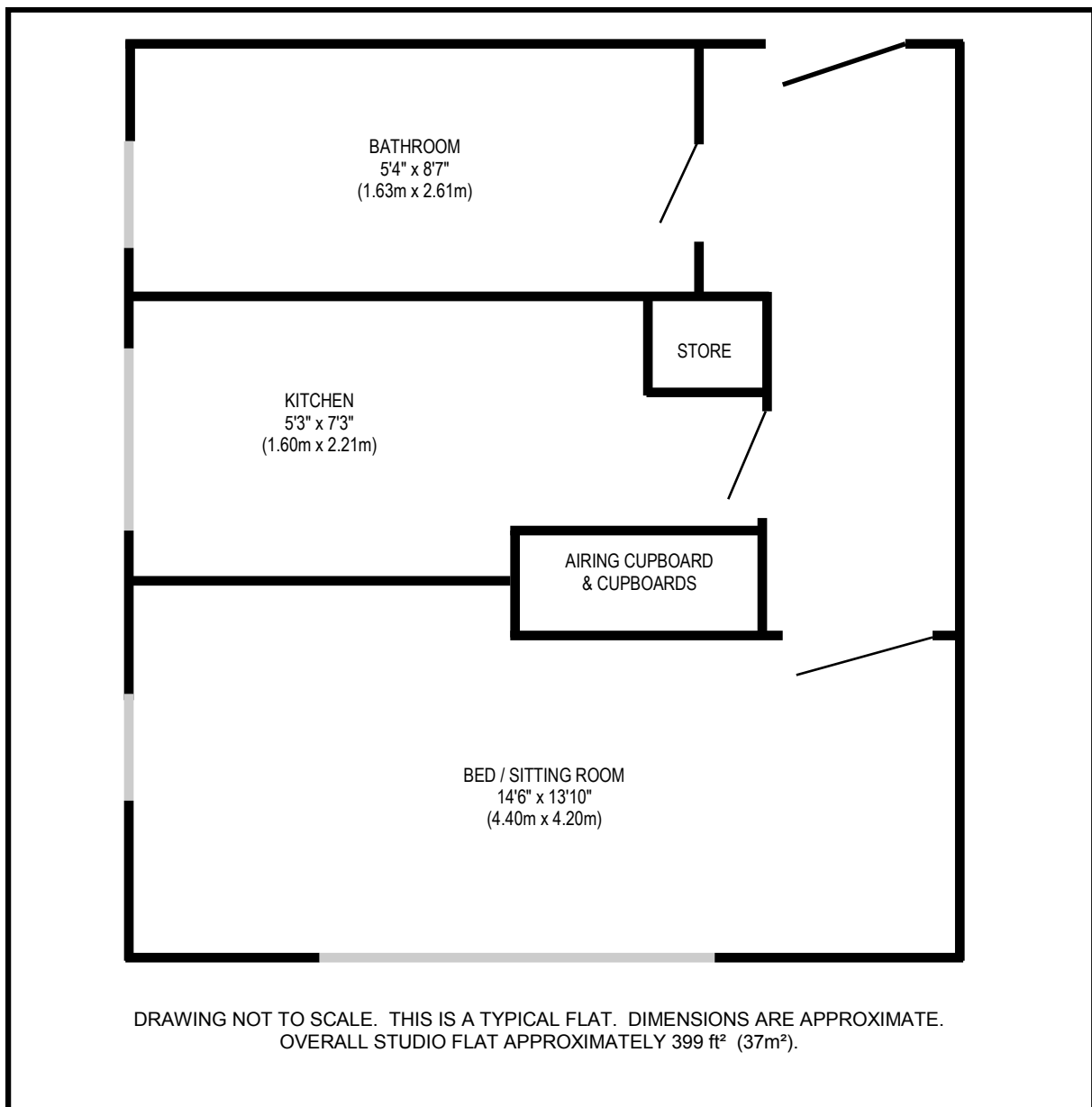
- 24 studio flats
- 8 one-bedroom flats
- 7 day per week visiting Sheltered Housing Officers / Warden Service
- 24-hour emergency care-line in each flat
- Communal gardens and car parking
- Guest room at scheme
- Community room
- Laundry room
- Stair lift to first floor

A TYPICAL STUDIO FLAT (OUR REF B71)

8 studio flats offering good sized accommodation, situated over the ground and first floors. These single sheltered elderly units offer good quality accommodation within a larger central Wimborne sheltered elderly housing scheme.



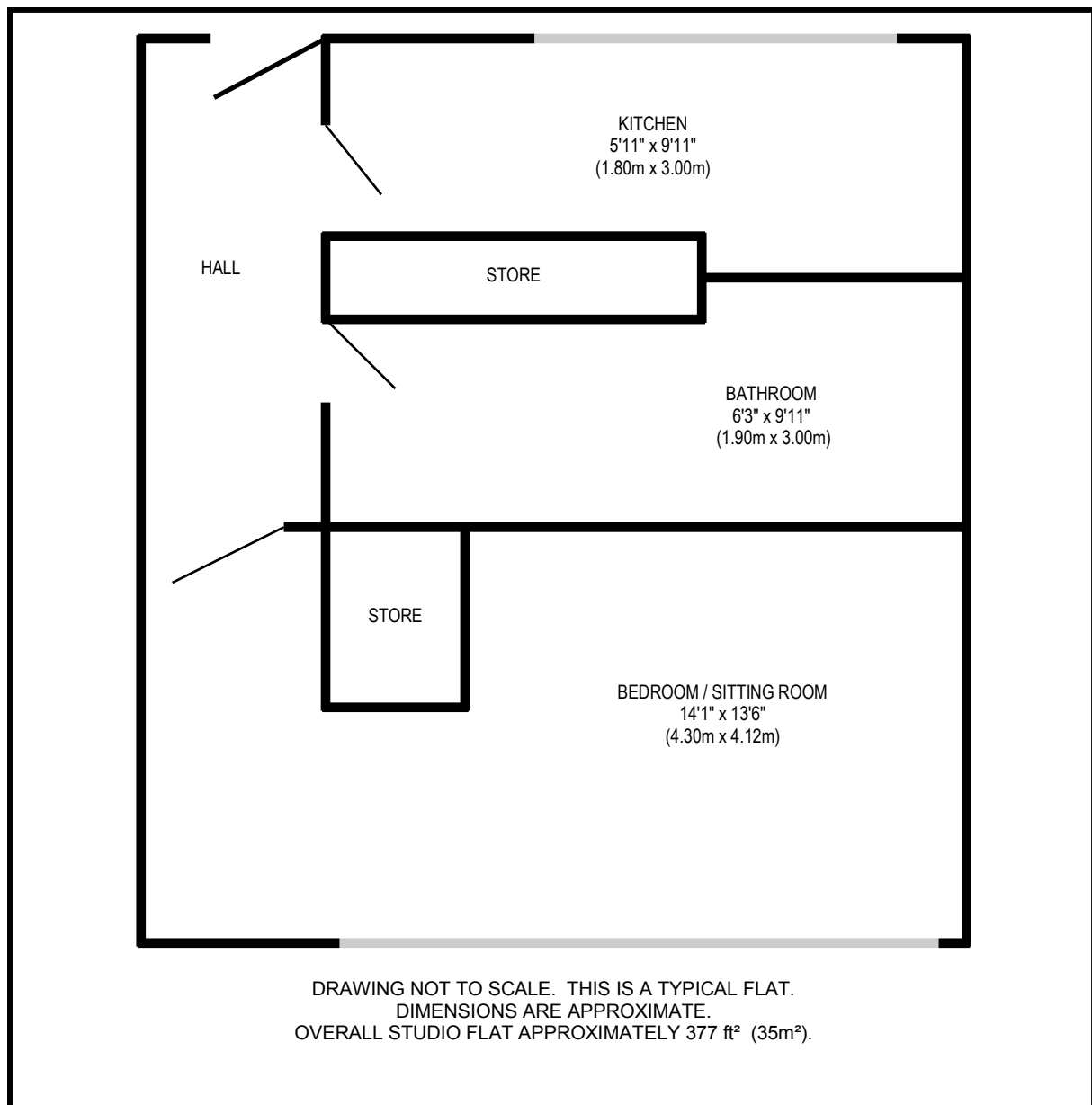
Two further studios are situated within the block opposite to this unit.



A TYPICAL STUDIO FLAT (OUR REF SV)

Studio flats are situated on both the ground and first floors, with views over the scheme gardens.

The studios offer well proportioned, good quality accommodation to single sheltered elderly tenants.



A TYPICAL ONE BEDROOM FLAT (OUR REF B37)

Four one bedroom flats offering good sized accommodation within this central Wimborne sheltered housing scheme.

Four further flats are situated in an opposite block and these also offer good sized accommodation.



DRAWING NOT TO SCALE. THIS IS A TYPICAL FLAT. DIMENSIONS ARE APPROXIMATE.
OVERALL ONE BEDROOM FLAT APPROXIMATELY 49 ft² (51m²).