

Pergins, Poole, Dorset



Key Features

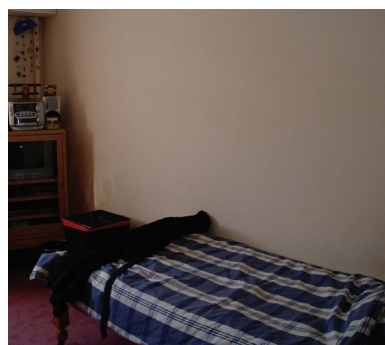
- Communal gardens
- Off-road car parking
- Learning Disability Support Service
- Emergency Careline unit in each flat

The Scheme

Pergins was remodelled in 2003 to provide supported living accommodation for adults with learning disabilities. In total there are nine flats at Pergins, made up of individual bedrooms (some with en suite bathrooms) with shared communal areas. There are four flats of four bedrooms, three flats with two bedrooms, one five bedroom flat and one, one bedroom flat and many disability adaptations. Accommodation is spread across ground and first floors.

Services

As a supported living property customers at Pergins receive regular visits from a Team of trained Learning Disability Support Workers. All support is tailored to individual's needs with individual support plans determining the frequency of support visits. Personal support plans are delivered by both support and care workers and Pergins benefits from 24 hour waking support. In addition all flats are fitted with a Careline unit, allowing access to help in an emergency 24 hours a day.



For more information about any East Boro housing scheme, to arrange a viewing or to apply for housing please contact us using the details below:



East Boro Housing Trust, Faulkner House, 31 West Street, Wimborne, Dorset BH21 1JS



info@ebht.org.uk



01202 883503



www.ebht.org.uk