

Bartley Court Wimborne, Dorset



Key Features

- Community room & communal gardens
- Laundry room
- Lift to some flats
- On site guest room
- Off-road parking (subject to availability)
- Sheltered Housing Officer Service
- Emergency Careline unit in each flat

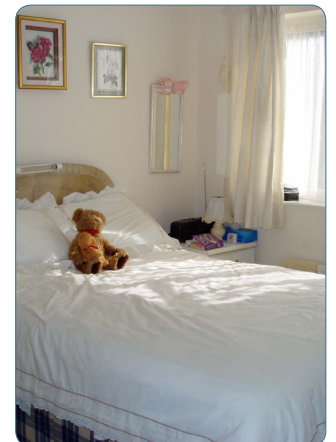
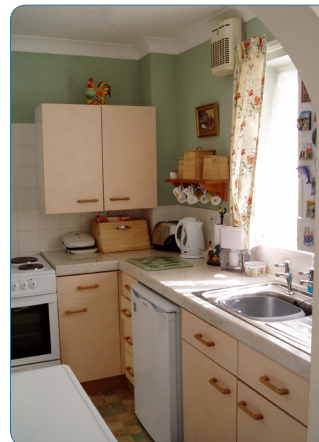
The Scheme

Built in 1993 as an extension to the existing East Boro scheme, Bartley Court comprises 11 one bedroom flats and four two bedroom flats. Bartley Court is a housing scheme for sheltered elderly tenants, ideally located in the centre of Wimborne. In 2009, the Bartley Court scheme was extended to include a further six one bedroom flats, built on the site of the Trust's old office at West Boro.

Services

As a Sheltered Housing scheme, Bartley Court will receive visits one day a week from a Sheltered Housing Officer, along with regular welfare calls each week.

All support is tailored to individual's needs and East Boro also operates a telephone Reassurance Service so that tenants can contact Support Staff. In addition, all flats are fitted with a Careline unit, allowing tenants to access help in an emergency, 24 hours a day, every day of the year.



For more information about any East Boro housing scheme, please contact:

East Boro Housing Trust

Faulkner House, 31 West Street, Wimborne, Dorset BH21 1JS

t: 01202 883503

e: info@ebht.org.uk

w: www.ebht.org.uk