

Boro Court **Parkstone, Poole, Dorset**



Key Features

- Communal gardens
- Off-road car parking
- Learning Disability Support Service
- Emergency Careline Unit in each flat

The Scheme

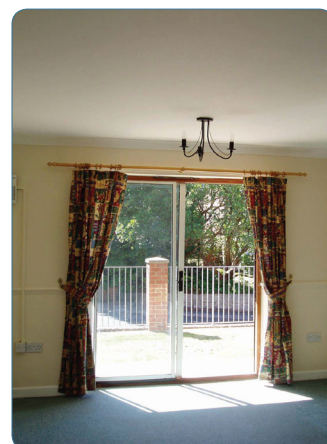
Built in 1995 Boro Court provides supported living accommodation for adults with learning disabilities. The scheme comprises 6 x self-contained flats, in each of which there are two individual bedrooms with shared communal areas.

Flats on the first and second floors benefit from balconies with views towards Poole Harbour. Boro Court is within easy access to facilities in both Bournemouth and Poole.

Services

As a supported living property tenants at Boro Court receive regular visits from a Team of trained Learning Disability Support Workers. All support is tailored to individual's needs with individual support plans determining the frequency of support visits.

In addition, all flats are fitted with a Careline unit allowing tenants to access help in an emergency 24 hours a day, every day of the year.



For more information about any East Boro housing scheme, please contact:

East Boro Housing Trust
Faulkner House, 31 West Street, Wimborne, Dorset BH21 1JS
t: 01202 883503 e: info@ebht.org.uk w: www.ebht.org.uk