

### Christophers Merley, Dorset



#### Key Features

- Community room
- Laundry room
- Communal gardens
- Off-road parking
- Sheltered Housing Officer Service
- Emergency Careline unit in each flat

#### The Scheme

Built in 1975 Christophers is a sheltered housing scheme for elderly sheltered tenants. Conveniently located close to Wimborne town centre, the scheme was extended in 2006.

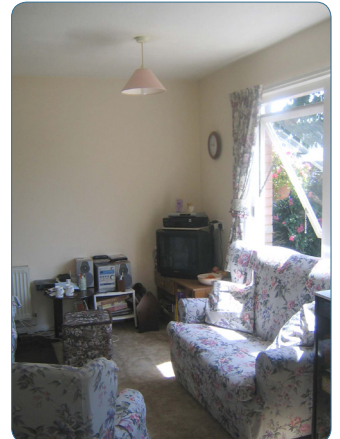
Altogether the scheme now comprises eight studio bungalows, 4 x one bedroom bungalows and 12 x one bedroom flats. There is also a Community Room on site and a laundry room facility.

#### Services

As a Sheltered Housing scheme, tenants of Cecil Court will receive visits one day a week from a Sheltered Housing Officer, along with regular welfare calls each week.

All support is tailored to individual's needs and East Boro also operates a telephone Reassurance Service so that tenants can contact Support Staff.

In addition, all flats are fitted with a Careline unit, allowing tenants to access help in an emergency 24 hours a day, every day of the year.



For more information about any East Boro housing scheme, please contact:

**East Boro Housing Trust**

**Faulkner House, 31 West Street, Wimborne, Dorset BH21 1JS**

**t: 01202 883503**

**e: [info@ebht.org.uk](mailto:info@ebht.org.uk)**

**w: [www.ebht.org.uk](http://www.ebht.org.uk)**