

East Borough Wimborne, Dorset



Key Features

- Communal gardens
- Off-road parking (subject to availability)
- Sheltered Housing Officer Service
- Emergency Careline unit in each flat
- Laundry room
- Lift to first floor flats
- On site guest room

The Scheme

Built in 1966, East Borough is a sheltered housing scheme for elderly tenants. In total there are 32 flats including a mixture of studio and one bedroom flats spread between the ground and first floors, providing good quality accommodation.

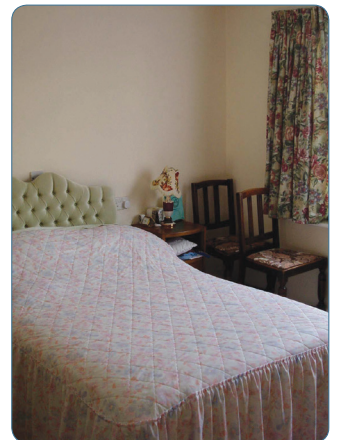
Adjacent to Bartley Court the scheme benefits from a town centre location close to shops and other amenities.

Services

As a sheltered housing scheme tenants of East Borough will receive visits one day a week from a Sheltered Housing Officer, along with regular welfare calls each week.

All support is tailored to individual's needs and East Boro also operates a telephone Reassurance Service so that tenants can contact Support Staff.

In addition, all flats are fitted with a Careline unit, allowing tenants to access help in an emergency 24 hours a day, every day of the year.



For more information about any East Boro housing scheme, please contact:

East Boro Housing Trust

Faulkner House, 31 West Street, Wimborne, Dorset BH21 1JS

t: 01202 883503

e: info@ebht.org.uk

w: www.ebht.org.uk