

Pergins **Poole, Dorset**



Key Features

- Communal gardens
- Off-road car parking
- Learning Disability Support Service
- Emergency Careline unit in each flat
- Support provided 24 hours per day

The Scheme

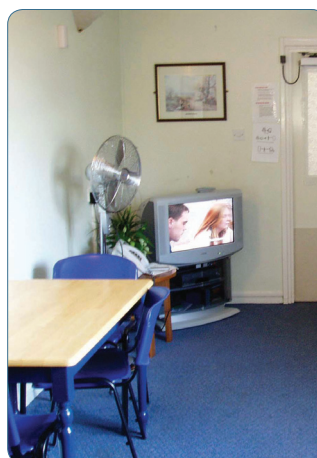
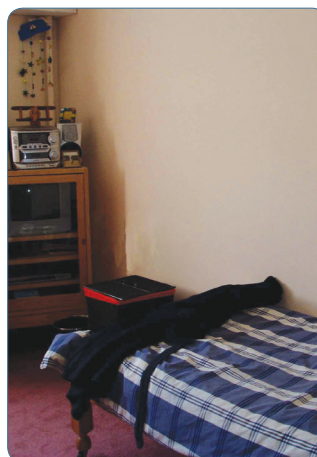
Pergins was remodelled in 2003 to provide supported living accommodation for adults with learning disabilities.

There are 24 units of accommodation within 13 flats which vary in size, located on the ground and first floors. The flats are made up of a mixture of one bedroom and larger flats with individual bedrooms (some en suite bathroom) with shared communal areas.

Services

As a supported living property, tenants at Pergins receive regular visits from a team of trained Learning Disability Support Workers. All support is tailored to individual's needs with individual support plans determining the frequency of support visits.

All flats are fitted with a Careline unit, allowing access to help in an emergency 24 hours a day. Personal support plans are delivered by both support and care workers and Pergins benefits from 24 hour waking support.



For more information about any East Boro housing scheme, please contact:

East Boro Housing Trust

Faulkner House, 31 West Street, Wimborne, Dorset BH21 1JS

t: 01202 883503

e: info@ebht.org.uk

w: www.ebht.org.uk